

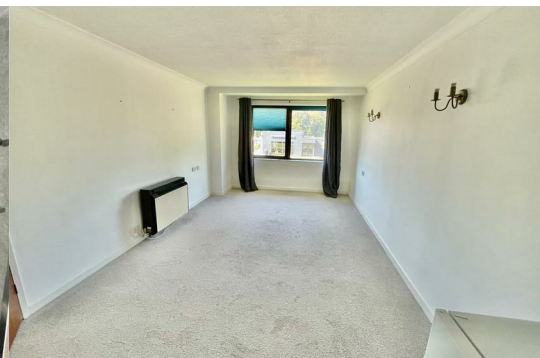


Homenene House Orton Goldhay Peterborough PE2 5PP

Asking price £30,000



Recently modernised 1 bedroom first floor flat, strictly over 55's, Located only a short walk to local amenities and bus stop.



Hall

Fitted carpet, intercom, entry phone, door to:

Shower Room

Recently refitted with three piece suite comprising double shower cubicle with glass screen, vanity wash hand basin, close coupled WC and heated towel rail tiled surround, vinyl flooring, door to:

Bedroom 3.56m (11'8") x 2.67m (8'9")

Window to rear, fitted carpet, wall light point(s), coving to textured ceiling, double door to built-in double wardrobes with hanging rails and shelving.

Lounge/Dining Room 5.36m (17'7") x 3.25m (10'8")

Two windows to rear, fitted carpet, TV point, wall light point(s), coving to textured ceiling, open plan, door to:

Kitchen 2.29m (7'6") x 1.64m (5'5")

Refitted with a matching range of base and eye level units, stainless steel sink unit with single drainer and mixer tap, space for fridge/freezer, built-in fan assisted oven, built-in four ring electric hob with extractor hood over, vinyl flooring, textured ceiling.

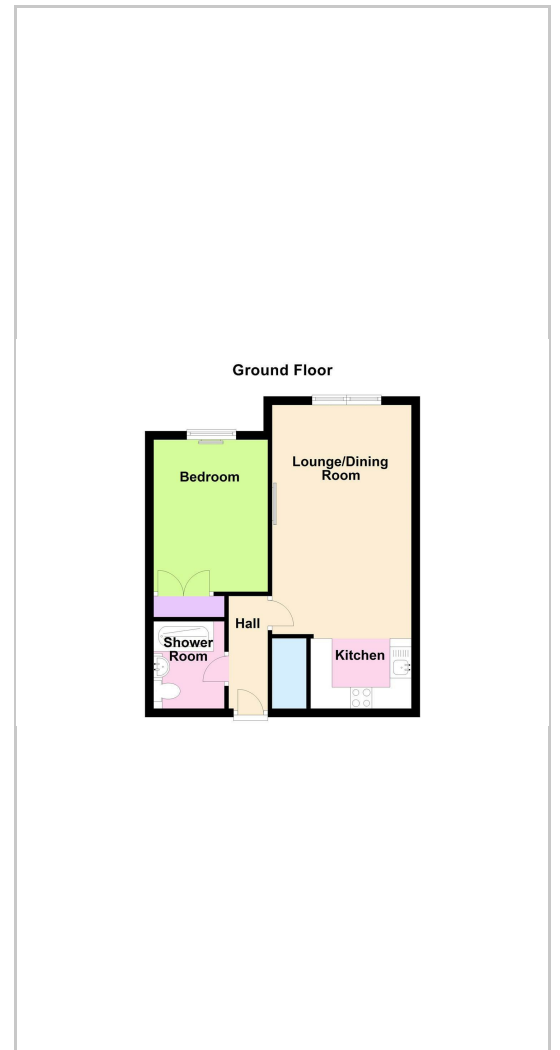
OUTSIDE

Communal parking area.

Area Map



Floor Plans



Energy Efficiency Graph

